

CROFT

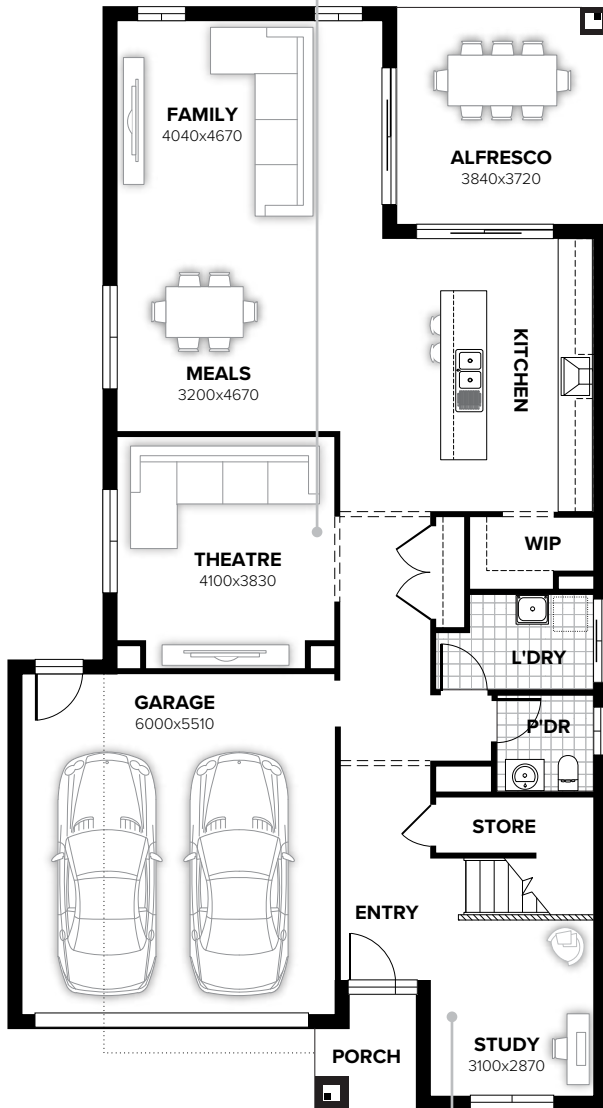


CROFT 305

4 2.5 1 2

movie night
any night

the fun
starts here



ground floor

work from
home



first floor

sleep easy,
in style and
space

FLOORPLAN OPTIONS

Want to put a personal touch on your home? Speak to your New Home Consultant about the exciting range of ready-to-go design options for this floorplan.

Popular design options include:

- | | |
|-------------------|------------------------|
| • Kitchen option | • Guest bedroom option |
| • Laundry upgrade | • Powder room upgrade |
| • Alfresco option | • Ensuite upgrade |

residence	250.67sqm	26.98sq
alfresco	14.28sqm	1.54sq
porch	3.32sqm	0.36sq
garage	36.37sqm	3.93sq
total	304.64sqm	32.79sq

Listed details based on Barrine façade floorplan (illustrated)

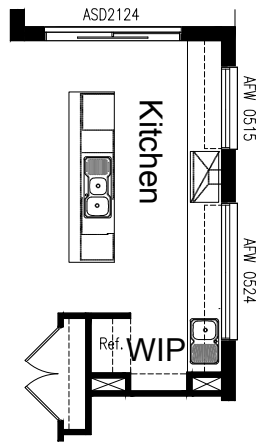
Call 13 BURBANK Visit burbank.com.au

Burbank 
#noplacelikehome

*Copyright conditions. All photos and illustrations are representative only. Floor plans and specifications may be varied by Burbank without notice, the dimensions are diagrammatic only and a Building Contract with final drawings will display correct dimensions and detail. All designs are the property of Burbank and must not be used, reproduced, copied or varied, wholly or in part without written permission from an authorised Burbank representative. Copyright Burbank Australia (NSW) Pty Ltd. ABN 88 610 822 870. NSW BL 295627C. ACT BL 2016566.

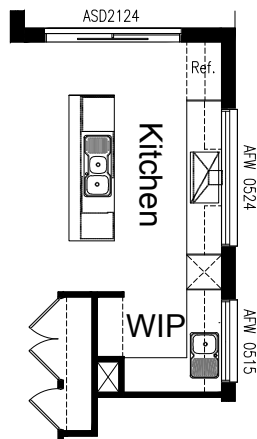
OPTION K1

Provide Kitchen option with 800mm wide island bench with extended bench top to Walk-in Pantry, relocated refrigerator space and additional single bowl sink. Including 900mm canopy range hood, 900mm gas cook top, 900mm under bench oven, 450mm drawer unit, dishwasher provision, microwave provision with pot drawer, 5No. 800mm base cupboards, 1No. 900mm base cupboard, 1No. 450mm base cupboard, 1No. 400mm base cupboard, 1No. 300mm base cupboard, 4No. 900mm overhead cupboards, 1No. 700mm overhead cupboard, 1No. 350mm overhead cupboard, 1No. 514x2410mm aluminium frame fixed window, 1No. 514x1450 aluminium frame fixed window, refrigerator space with open shelf above. 4No. 300mm shelves to WIP and 4No. 300mm shelves to Linen cupboard in lieu of standard 450mm shelves.



OPTION K2

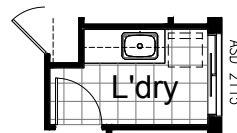
Provide Kitchen option with 800mm wide island bench with extended bench top to Walk-in Pantry, relocated refrigerator space and additional single bowl sink. Including 900mm canopy range hood, 900mm gas cook top, 900mm under bench oven, 450mm drawer unit, dishwasher provision, microwave provision with pot drawer, 1No. 900mm base corner cupboard, 2No. 900mm base cupboards, 2No. 600mm base cupboard, 1No. 800mm base cupboard, 1No. 700mm base cupboard, 1No. 300mm base cupboard, 1No. 900mm overhead cupboard, 2No. 800mm overhead cupboards, 1No. 450mm overhead cupboard, 1No. 400mm overhead cupboard, 1No. 514x2410mm aluminium frame fixed window, 1No. 514x1450 aluminium frame fixed window, refrigerator space with open shelf above. 4No. 450mm shelves to WIP and additional 820mm hinged door to Linen cupboard.



OPTION IP2

Provide Laundry Option with additional inset laminated trough, 1No. 900mm base cupboards, 1No. 450mm base cupboard, 1No. 900mm overhead cupboard, 1No. 450mm overhead cupboard with additional tiled splashback and bench top to suit.

Note: Not available with IP3



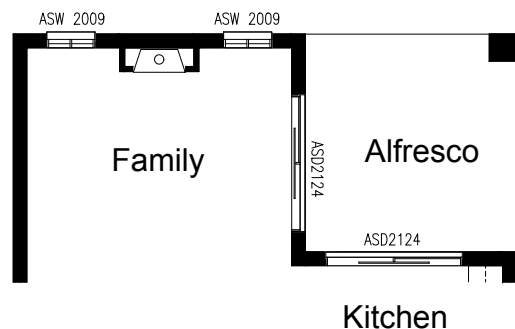
OPTION EP1

Provide Stacker sliding door option by replacing 2No. ASD2124 sliding doors with ASDS2132 and ASDS 2126 stacker sliding doors. Steel post to corner to support lintels above doors.



OPTION IP1

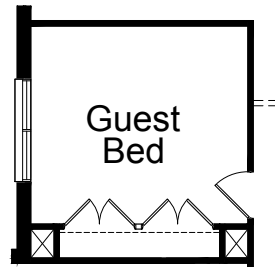
Provide Jetmaster SL-350 gas fireplace, 400mm off floor level in a 1400mm x 420mm boxed out plaster wall with a 4 sided black fascia to Family room side wall.



OPTION IP2

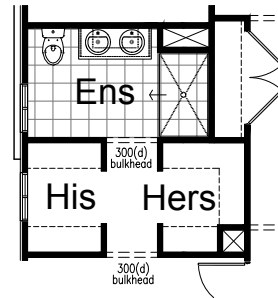
Provide Guest Bedroom in lieu of Theatre including remove opening and provide 820mm flush panel door, increase feature wall box out to create robe and provide single shelf and hanging rail and 2No. double 620mm flush panel door units.

Note: Should be selected with IP3



OPTION LD2

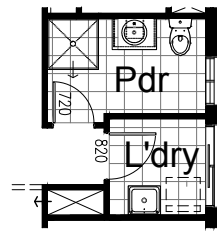
Provide Ensuite upgrade by increasing Hers and decreasing His by 75mm, reconfigure heating stack and provide 1500x900mm tiled shower base, relocate WC and provide 1282mm vanity unit with double basin.



OPTION IP3

Provide Powder room upgrade including relocate Laundry to previous Powder room location, reduce Linen to square off Powder room and remove 1No. 820mm flush panel door and reduce shelving to suit. Widen Powder Room entry to 1840mm reducing passage width and provide 900x900mm tiled shower base and 782mm vanity unit in lieu of standard.

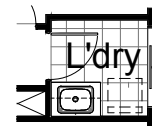
Note: Should be selected with IP2 and not available with LD1



OPTION LD2

Provide Laundry Option with additional inset laminated trough, 1No. 800mm base cupboard, 1No. 800mm overhead cupboard with additional tiled splashback and bench top to suit.

Note: Only available with IP3



OPTION IP4

Provide Ensuite upgrade including converting His WIR into WC and extend Hers to create single WIR. relocate heating stack to Linen and provide double 620mm doors in lieu of 820mm. Provide additional 720mm flush panel door to WC and floor tiles to suit. Provide 1930mm tiled shower base to Ensuite and built in bath with tiled hob. provide 1200x1450mm aluminium sliding window to Ensuite in lieu of standard and 1200x850mm aluminium sliding window to WC.

